

# Catalyst - Howland

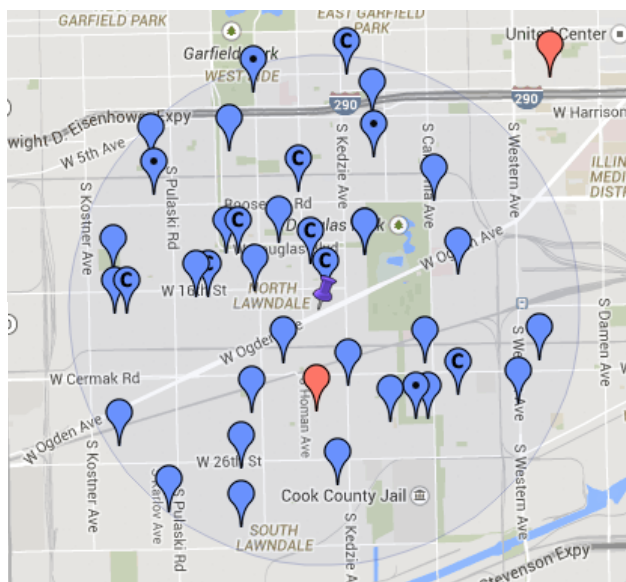
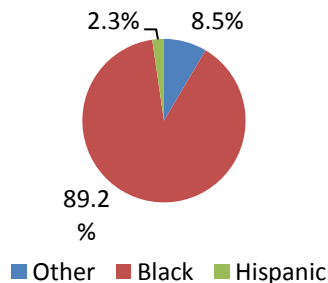
Elementary School



Catalyst - Howland is a charter elementary school located at 1616 S Spaulding Ave in the North Lawndale neighborhood (CPS school ID 400020). Catalyst - Howland serves 472 students from K-8th grade. It was last re-authorized in 2010 with a 5-year contract.

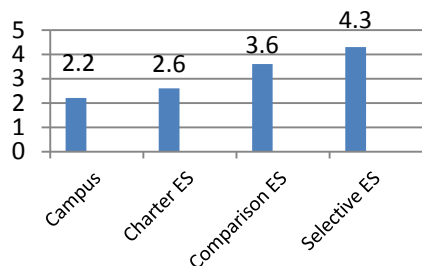
## 2013-14 School Year

Enrollment: 472  
 Free Lunch: 99.2%  
 ELL: 0.2%  
 Bi-Lingual Services?: Unknown  
 Attendance: 94.1%  
 Quality Rating<sup>1</sup>: Level 2



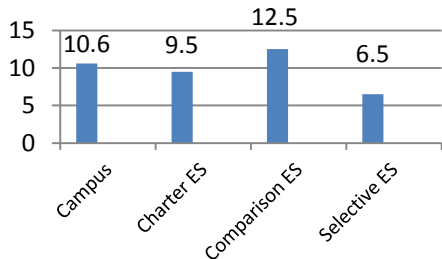
Catalyst - Howland is located within 1.5 miles of 36 elementary schools.

## Total Quality Score



## Students with Disabilities ("SWD")

### SWD Enrollment Fall 2014



## Disability Access

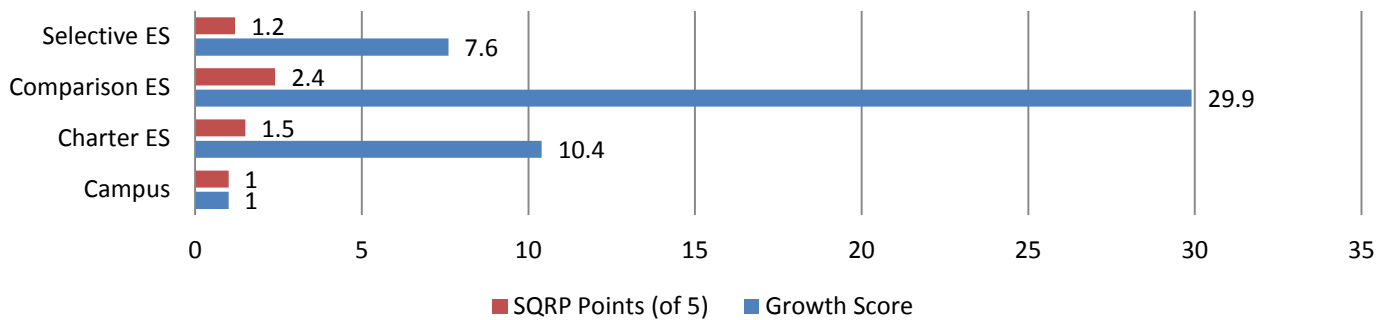
Is the school accessible? Generally Accessible  
 Is the case manager certified? Yes  
 Did SWD participate in the SQRP rating<sup>1</sup>? Yes  
 Does the school require disability information on the application? No  
 Does the application include a non-discrimination statement? Yes

School	Type	Rating	% IEP
CARDENAS	Attendance Area	1+	10%
CHALMERS	Attendance Area	3	14.90%
CORKERY	Attendance Area	2+	11.70%
CROWN	Attendance Area	3	15.70%
DVORAK TECH	Attendance Area	2	10.90%
ERICSON	Elementary Magnet	1	8.30%
FINKL	Attendance Area	2	22.70%
FRAZIER CHTR	Charter	2	9.70%
FRAZIER	Elementary Magnet	1	10.20%
GREGORY	Attendance Area	1	14.30%
HAMMOND	Attendance Area	2	19.60%
HERZL	Attendance Area	2	11.80%
HUGHES, C	Attendance Area	2	10.60%
JENSEN	Attendance / Magnet	3	11.10%
JOHNSON	Attendance Area	2+	13.10%
KANOON	Attendance / Magnet	2	12.40%
KELLMAN	Citywide	2	7.70%
KIPP - ASCEND	Charter	1+	12.20%
LAWNDALE	Attendance Area	3	9.60%
LEARN - R BUTLER	Charter	Unrated	7.10%
LEGACY CHTR	Charter	2	12.40%
LITTLE VILLAGE	Attendance Area	1	9.60%
LOCKE, A CHTR	Charter	Unrated	6.80%
MASON	Attendance Area	2	13.80%
MCCORMICK	Attendance Area	2	8%
O. DE DOMINGUEZ	Attendance Area	Unrated	11.30%
PENN	Attendance Area	2+	27%
PICKARD	Attendance Area	2+	14.80%
PLAMONDON	Attendance Area	1	12.50%
SAUCEDO	Elementary Magnet	1	8.80%
SPRY ES	Citywide	2+	13%
TELPOCHCALLI	Attendance Area	2+	19.30%
UNO CHTR - PAZ	Charter	2+	9.15%
WEBSTER	Attendance Area	2+	11.70%
WHITNEY	Attendance Area	1	8.6%

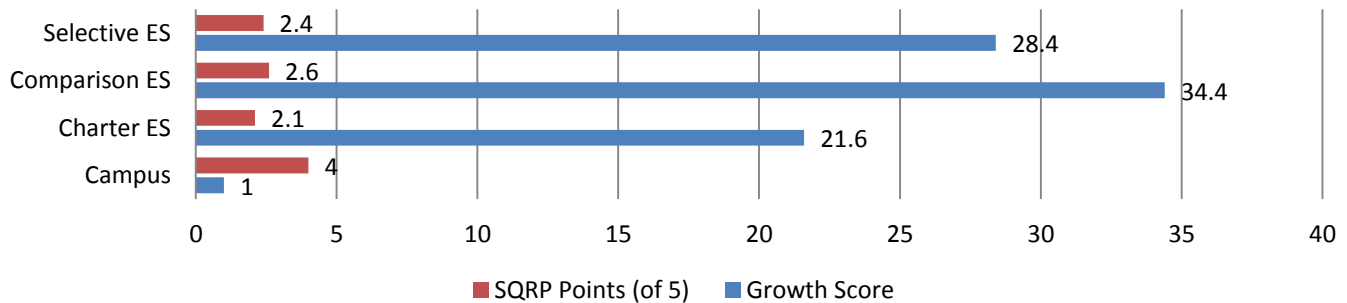
<sup>1</sup> On the Chicago Public Schools School Quality Rating Policy for the 2013-14 school year.



## SWD Reading Growth Scores



## SWD Math Growth Scores



Students with Disabilities participation rate on the NWEA Test: 100%

### Enrollment Trends

Catalyst - Howland's mobility rate for the 2012-13 school year, according to CPS, is 35.3%, compared to 12.0% for charter elementary schools, 22.8% for comparison schools, and 6.0% at selective schools.

Percent of students who unenroll from the school for *any reason*

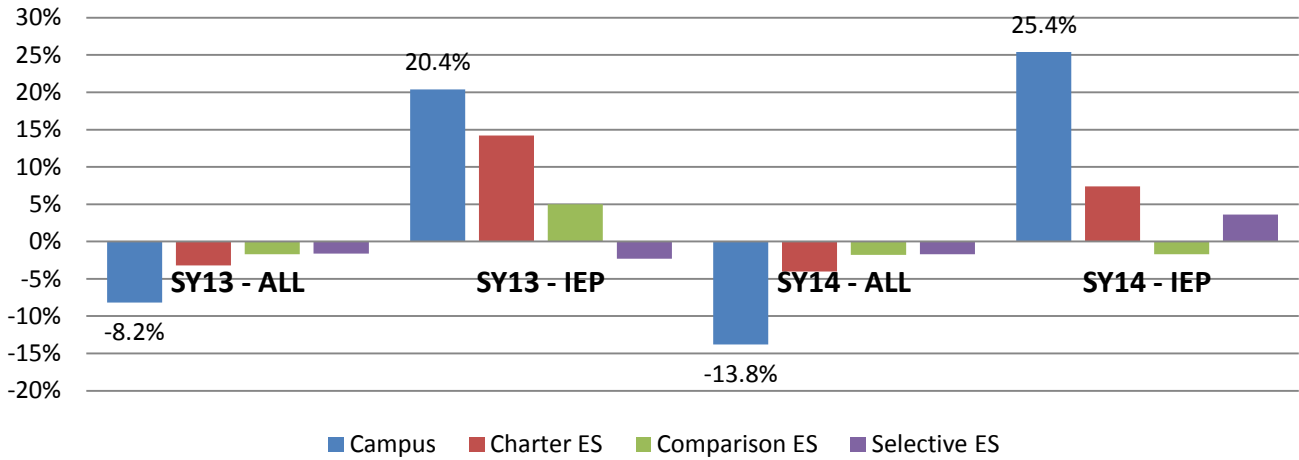
	SY 2012-13		SY 2013-14	
	All Students	SWD	All Students	SWD
Catalyst - Howland	14.5%	[Redacted]	14.0%	[Redacted]
Charter ES	7.6%	[Redacted]	7.8%	[Redacted]
Comparison ES	9.8%	12.8%	9.3%	10.9%
Selective ES	6.9%	0.0%	6.5%	7.7%

Change in Percent of SWD During the School Year

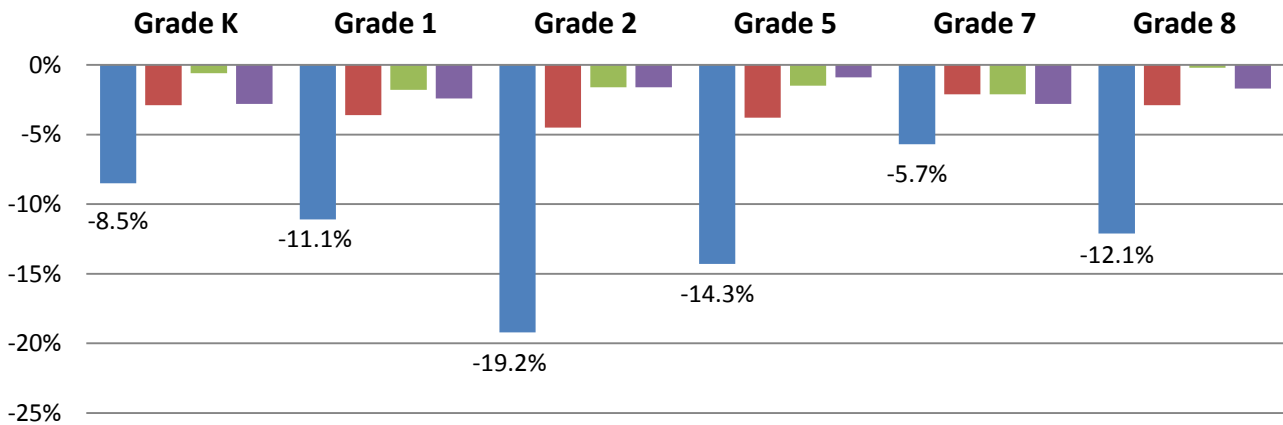
	SY 2012-13		SY 2013-14	
	Fall Rate	Change	Fall Rate	Change
<b>Catalyst - Howland</b>	9.8%	3.1%	10.6%	5.9%
<b>Charter ES</b>	9.0%	1.6%	9.5%	1.5%
<b>Comparison ES</b>	12.3%	2.0%	12.5%	2.0%
<b>Selective ES</b>	6.7%	0.1%	6.5%	0.7%



## Net Change in Student Body



## Average Net Enrollment Change during SY 2013-14

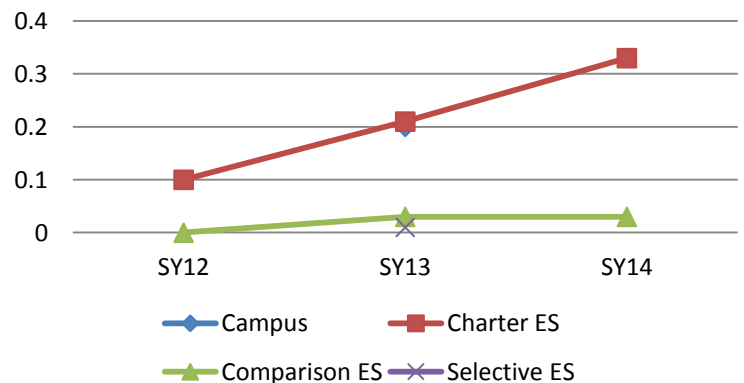


Attendance criteria for promotion? Yes  
 Behavior criteria for promotion? No

### Discipline

Use the CPS Code of Conduct? Yes  
 Use a "sweat the small stuff" discipline code? No  
 Use restorative practices<sup>2</sup>? Yes  
 Zero-tolerance for gangs or fighting<sup>3</sup>? No

## Expulsion Rate



<sup>2</sup> Restorative practices include peer mediation, peace circles, and peer juries.

<sup>3</sup> Does the campus code of conduct require at least one day of out-of-school suspension for fighting (general with peers) or any gang related offense.