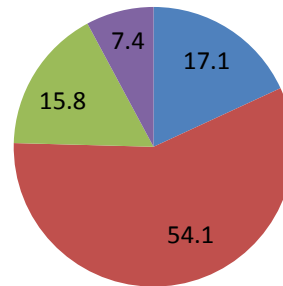




Chicago Virtual is a charter school located at 38 S Peoria St in the Near West Side neighborhood. Chicago Virtual serves 690 students from K-12th grade. It was last re-authorized in 2011 with a 5-year contract.

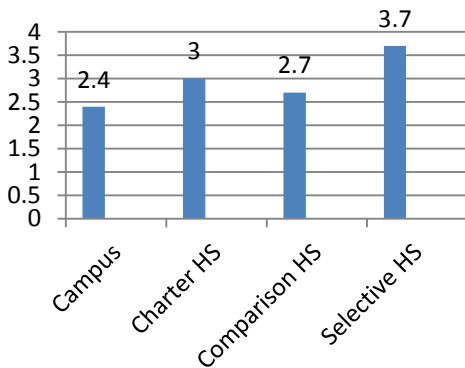
2013-14 School Year

Enrollment: 690
 Free Lunch: 61.6%
 ELL: 2.5%
 Bi-Lingual Services? Yes
 Attendance Rate: 95.3%



Quality Rating¹: Level 2

Total Quality Score



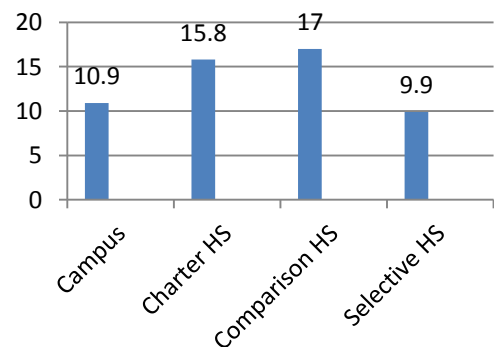
■ White ■ Black ■ Hispanic ■ Asian

Students with a Disability (“SWD”)

Disability Access

Is the school accessible? Fully Accessible
 Is the case manager certified? Yes
 Did SWD participate in the quality rating? Redacted
 Does the school require disability information on the application? Unknown
 Does the application include a non-discrimination statement? Yes

SWD Enrollment Fall 2014



Equip for Equality is the independent, federally mandated protection and advocacy system for people with disabilities in Illinois. Questions should be directed to Charlie Wysong, (312) 895-7340.

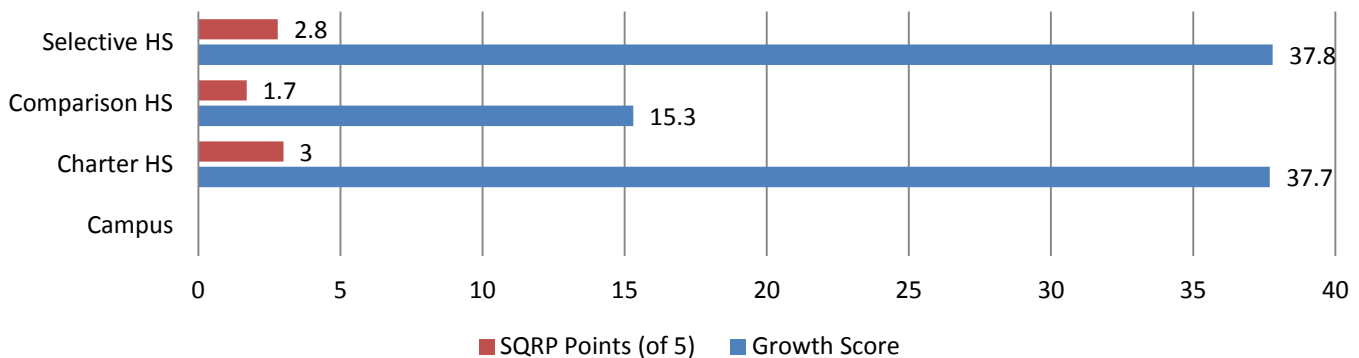
¹ On the Chicago Public Schools School Quality Rating Policy for the 2013-14 school year.



Test results for Students with Disabilities

Students with Disabilities ACT participation rate: Redacted

SWD Test Growth Scores from Quality Ratings



Enrollment Trends

Chicago Virtual's mobility rate for the 2012-13 school year, according to CPS, is 31.6%, compared to 18.8% for charter high schools, 28.0% for comparison schools, and 8.4% at selective schools.

Percent of students who unenroll from the school for *any reason*.

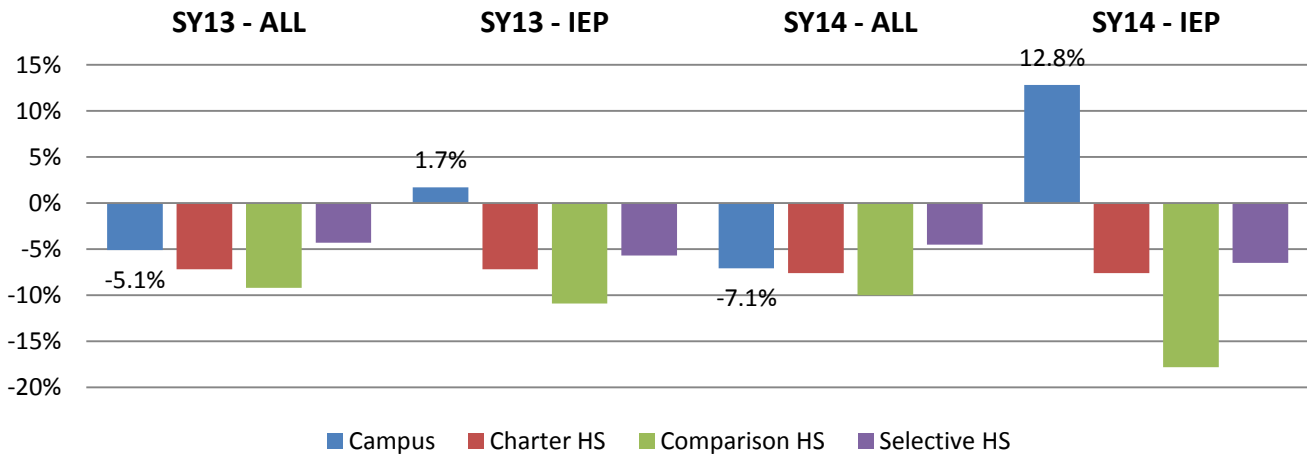
	SY 2012-13		SY 2013-14	
	All Students	SWD	All Students	SWD
Chicago Virtual	21.4%	21.7%	21.2%	18.7%
Charter HS	14.4%	18.5%	11.4%	16.5%
Comparison HS	18.5%	21.5%	18.3%	21.5%
Selective HS	6.8%	7.3%	6.4%	12.0%

Change in Percent SWD During the School Year

	SY 2012-13		SY 2013-14	
	Fall Rate	Change	Fall Rate	Change
Chicago Virtual	10.0%	0.7%	10.9%	2.5%
Charter HS	14.7%	-0.1%	15.8%	0.1%
Comparison HS	16.8%	-0.1%	17.0%	-0.6%
Selective HS	9.9%	-0.1%	9.9%	0.0%



Net Change in Student Body

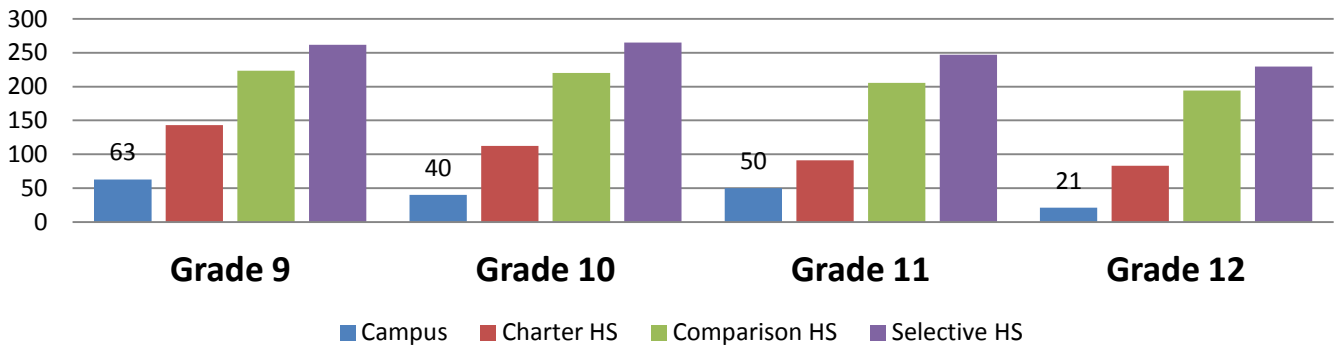


Enrollment Trends by Grade

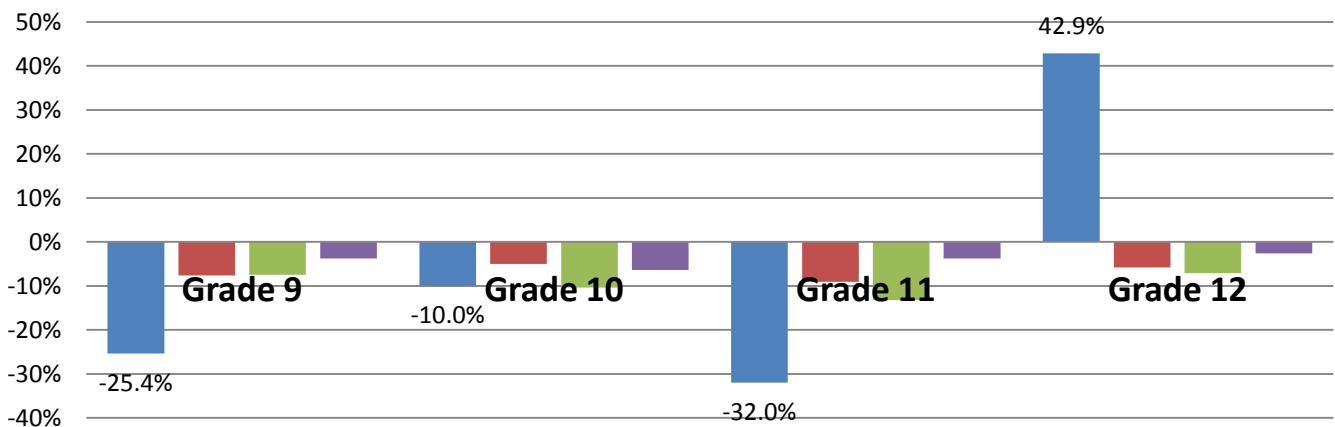
Attendance criteria for promotion? Unknown

Behavior criteria for promotion? Unknown

Average Enrollment Fall 2014



Average Net Enrollment Change during SY 2013-14



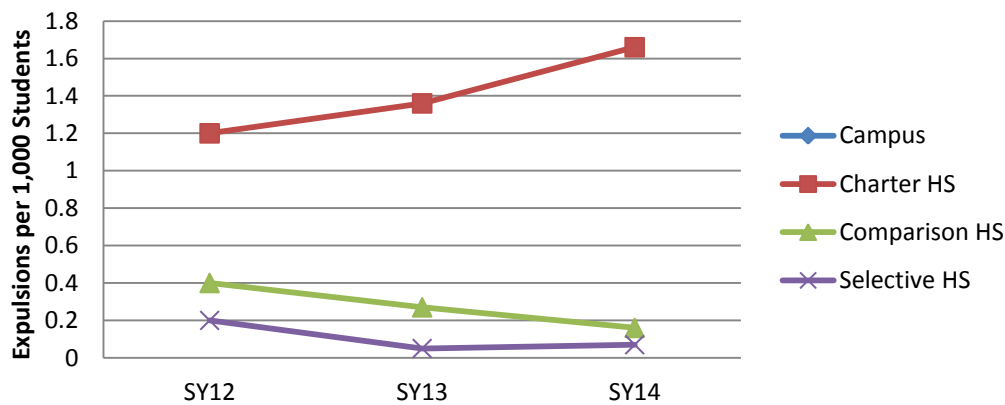


Discipline

Use the CPS Code of Conduct?	Yes
Use a “sweat the small stuff” discipline code (e.g. demerits)?	No
Use restorative practices ² ?	Yes
Zero-tolerance for gangs or fighting ³ ?	No

There were no expulsions at Chicago Virtual.

Expulsion Rate



² Restorative practices include peer mediation, peace circles, and peer juries.

³ Does the campus code of conduct require at least one day of out-of-school suspension for fighting (general with peers) or any gan related offense.