

Erie Elementary

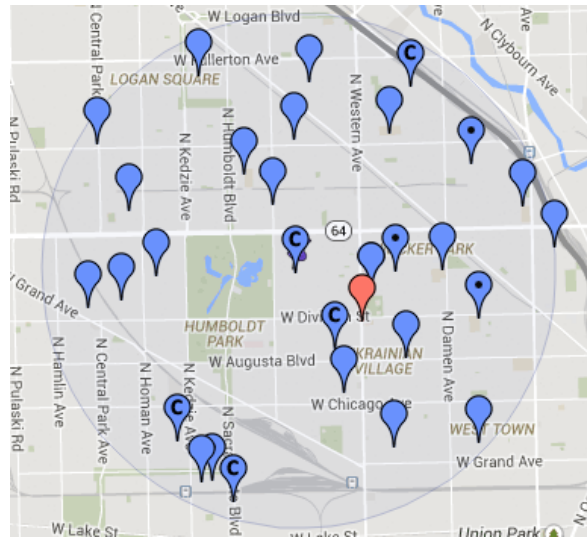
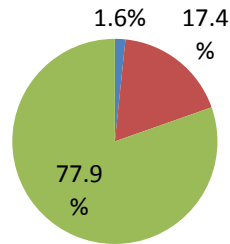


Elementary School

Erie Elementary is a charter elementary school located at 1405 N. Washtenaw Ave in the West Town neighborhood (CPS school ID 400039). Erie Elementary serves 425 students from K-8th grade. It was last re-authorized in 2010 with a 5-year contract.

2013-14 School Year

Enrollment: 425
 Free Lunch: 89.4%
 ELL: 28.7%
 Bi-Lingual Services?: Yes
 Attendance: 95.6%

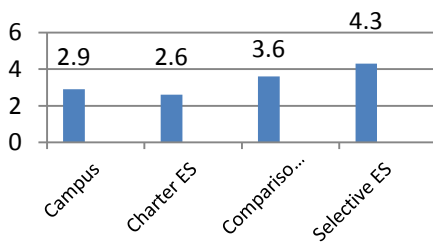


Quality Rating¹: Level 2

■ White ■ Black ■ Hispanic

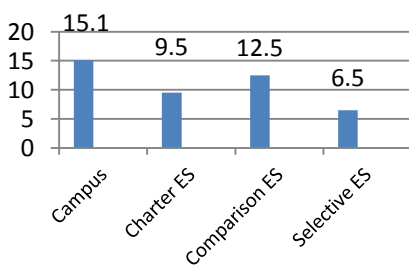
Erie Elementary is located within 1.5 miles of 28 elementary schools.

Total Quality Score



Students with Disabilities ("SWD")

SWD Enrollment Fall 2014



Disability Access

Is the school accessible? Generally Accessible
 Is the case manager certified? Yes
 Did SWD participate in the SQRP rating¹? Redacted

School	Type	Rating	% IEP
BURR	Attendance Area	1+	10.60%
CAMERON	Attendance Area	1	11.30%
CASALS	Attendance Area	1	13.70%
CHASE	Attendance Area	1	19.10%
CHOPIN	Attendance Area	2+	20.10%
CICS - BUCKTOWN	Charter	2+	13%
COLUMBUS	Attendance Area	1	5%
DARWIN	Attendance Area	2+	15.80%
DIEGO	Attendance Area	2	14.40%
DODGE	Citywide	2	13.10%
DRUMMOND	Elementary Magnet	1+	7.80%
FUNSTON	Attendance Area	2	14.70%
GOETHE	Attendance Area	1	10.30%
LASALLE II	Elementary Magnet	1	15.50%
LEARN CHTR 7	Charter	Unrated	10.30%
LOWELL	Attendance Area	2	27.50%
LOZANO	Attendance Area	2	26.70%
MITCHELL	Attendance Area	1	13.60%
MOOS	Attendance Area	1	13.10%
MORTON	Attendance Area	2	12.50%
POLARIS CHTR	Charter	3	14.20%
PRITZKER	Regional Gifted	1	10.60%
PULASKI	Attendance Area	1+	8.70%
SABIN	Magnet	2+	9.40%
STOWE	Attendance Area	2	17.10%
TALCOTT	Attendance Area	1+	17.50%
UNO - E. SANTIAGO	Charter	1	18%
YATES	Attendance	2+	29.50%

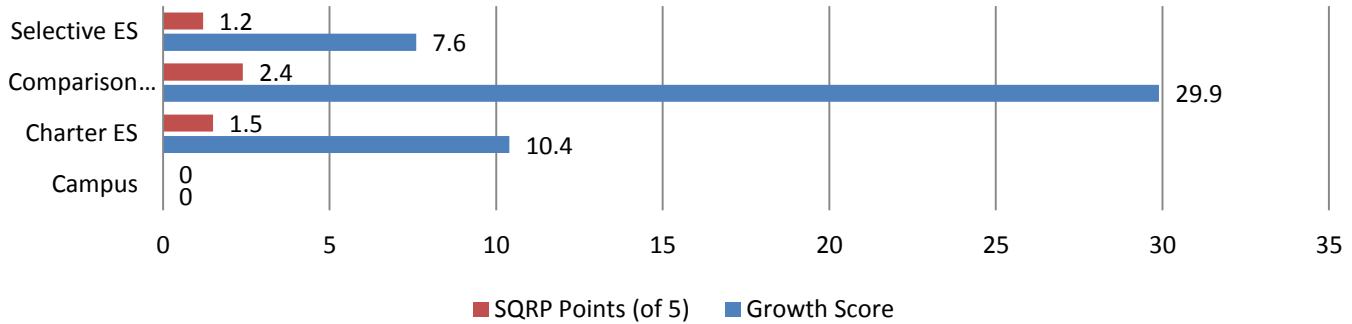
Equip for Equality is the independent, federally mandated protection and advocacy system for people with disabilities in Illinois. Questions should be directed to Charlie Wysong, (312) 895-7340.

Does the school require disability information on the application? No
 Does the application include a non-discrimination statement? No

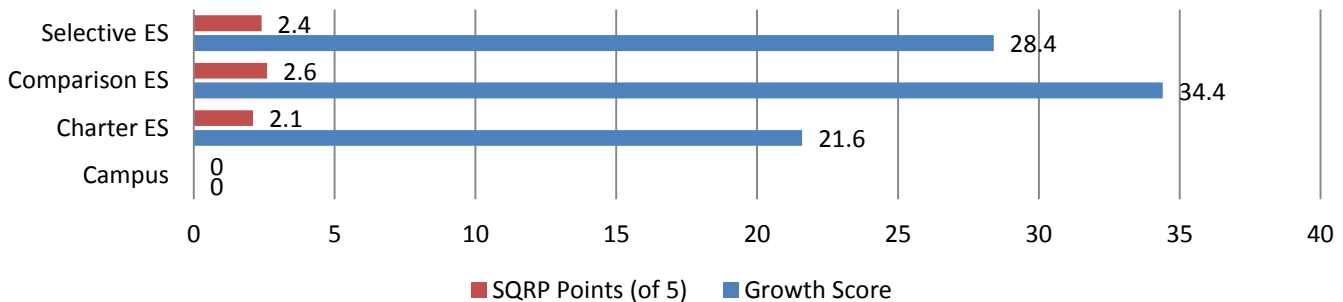
¹ On the Chicago Public Schools School Quality Rating Policy for the 2013-14 school year.



SWD Reading Growth Scores



SWD Math Growth Scores



Students with Disabilities participation rate on the NWEA Test: Redacted

Enrollment Trends

Erie Elementary's mobility rate for the 2012-13 school year, according to CPS, is 2.7%, compared to 12.0% for charter elementary schools, 22.8% for comparison schools, and 6.0% at selective schools.

Percent of students who unenroll from the school for *any reason*

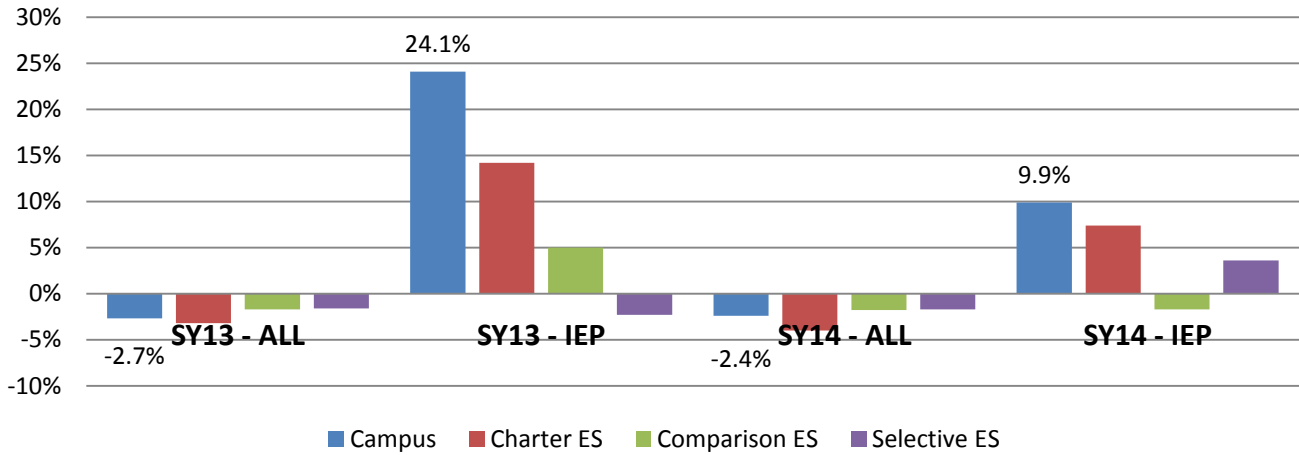
	SY 2012-13		SY 2013-14	
	All Students	SWD	All Students	SWD
Erie Elementary	6.0%	[Redacted]	4.2%	[Redacted]
Charter ES	7.6%	[Redacted]	7.8%	[Redacted]
Comparison ES	9.8%	12.8%	9.3%	10.9%
Selective ES	6.9%	0.0%	6.5%	7.7%

Change in Percent of SWD During the School Year

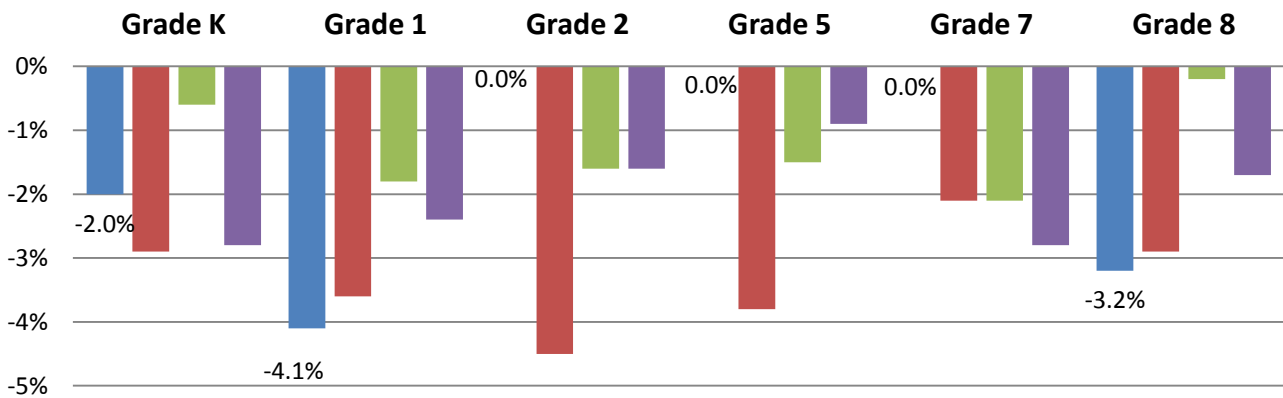
	SY 2012-13		SY 2013-14	
	Fall Rate	Change	Fall Rate	Change
Erie Elementary	13.0%	3.6%	15.1%	2.0%
Charter ES	9.0%	1.6%	9.5%	1.5%
Comparison ES	12.3%	2.0%	12.5%	2.0%
Selective ES	6.7%	0.1%	6.5%	0.7%



Net Change in Student Body



Average Net Enrollment Change during SY 2013-14

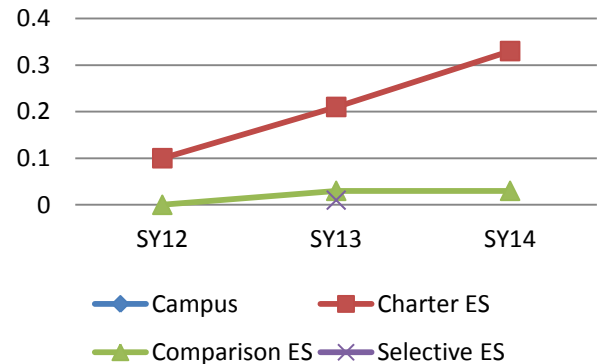


Attendance criteria for promotion? Unknown
 Behavior criteria for promotion? Unknown

Discipline

Use the CPS Code of Conduct? No
 Use a "sweat the small stuff" discipline code? No
 Use restorative practices²? No
 Zero-tolerance for gangs or fighting³? No

Expulsion Rate



² Restorative practices include peer mediation, peace circles, and peer juries.

³ Does the campus code of conduct require at least one day of out-of-school suspension for fighting (general with peers) or any gang related offense.