

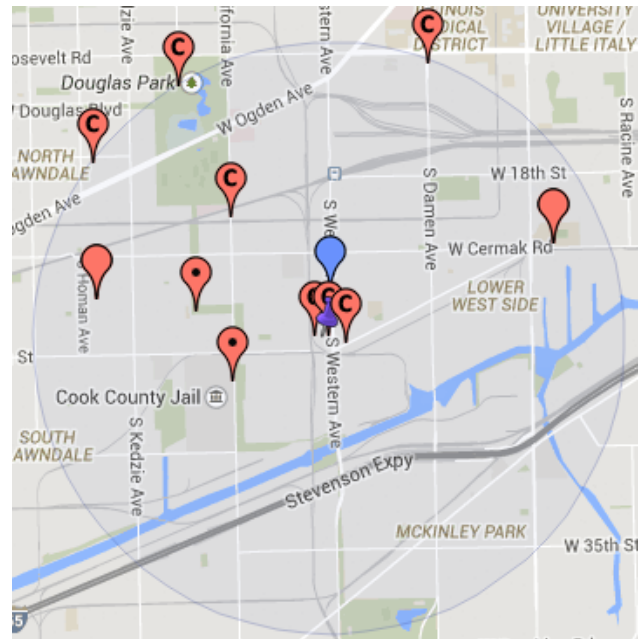
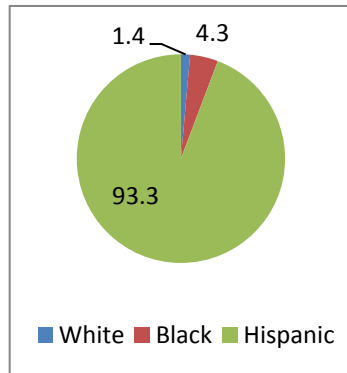


Instituto Health Sciences High School

Instituto Health Sciences is a charter high school located at 2520 S. Western Ave in the Lower West Side neighborhood. Instituto Health Sciences serves 762 students from 9th-12th grade. It was re-authorized in 2010 with a 5-year contract.

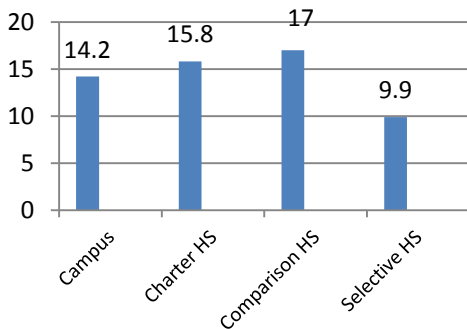
2013-14 School Year

Enrollment: 762
 Free Lunch: 96.5%
 ELL: 11.7%
 Bi-Lingual Services: No
 Attendance: 92.7%



Students with a Disability (“SWD”)

SWD Enrollment Fall 2014



Instituto Health Sciences is located within 1.5 miles of 9 high schools.

School	Type	Rating	% IEP
FARRAGUT HS	Attendance Area	2	20.3%
INSTITUTO – JUSTICE & LEAD	Charter – Option	2+	10.0%
INSTITUTO – RLLM	Charter – Option	2	17.6%
JUAREZ HS	Attendance Area	2	14.2%
NOBLE - UIC	Charter	1+	10.6%
NORTH LAWNSDALE CHTR - COLLINS	Charter	2	12.4%
NORTH LAWNSDALE - CHRISTIANA	Charter	2+	15.6%
SPRY HS	Citywide	2+	15.9%
YCCS - LATINO YOUTH	Charter – Option	1+	17.4%

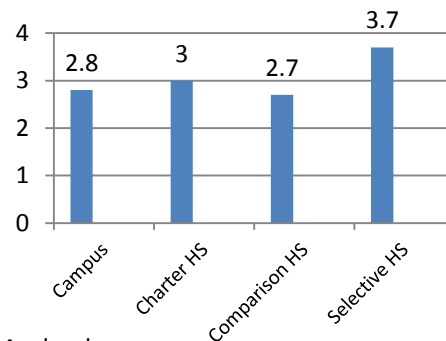
Disability Access

- Is the school accessible? No/Unknown
- Is the case manager certified? Yes
- Did SWD participate in the quality rating¹? Yes
- Does the school require disability information on the application? Unknown
- Does the application include a non-discrimination statement? Unknown

Equip for Equality is the independent, federally mandated protection and advocacy system for people with disabilities in Illinois. Questions should be directed to Charlie Wysong, (312) 895-7340.

Quality Rating¹: Level 2+

Total Quality Score



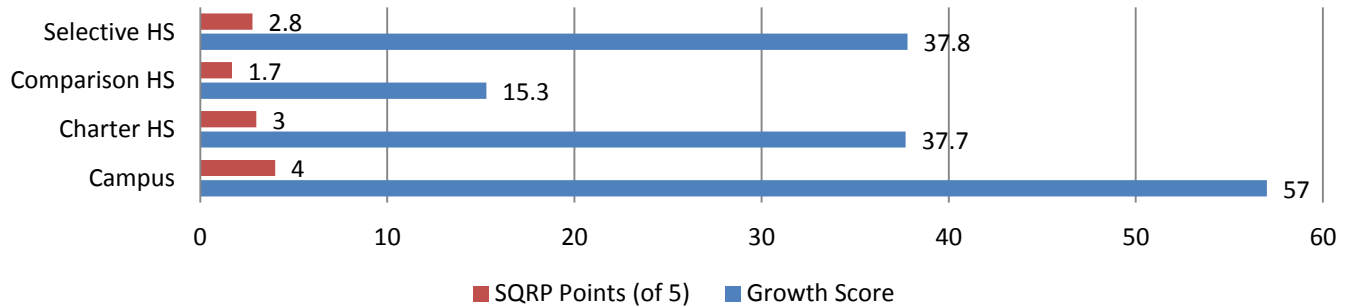
¹ On the Chicago Public Schools School Quality Rating Policy for the 2013-14 school year.



Test results for Students with Disabilities

Students with Disabilities participation rate: 98%

SWD Test Score Growth from the Quality Ratings



Enrollment Trends

Instituto Health Sciences's mobility rate for the 2012-13 school year, according to CPS, is 1.9%, compared to 18.8% for charter high schools, 28.0% for comparison schools, and 8.4% at selective schools.

Percent of students who unenroll from the school for *any reason*.

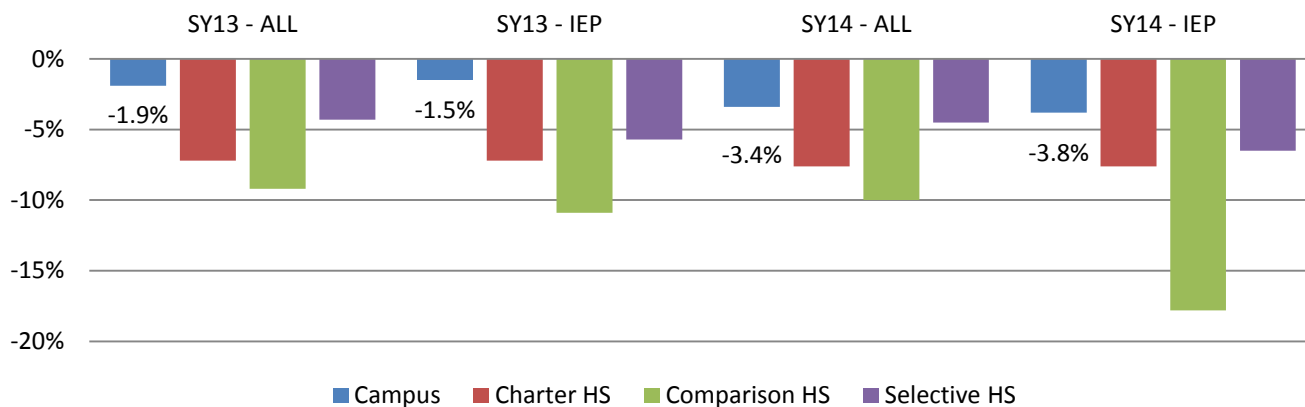
	SY 2012-13		SY 2013-14	
	All Students	SWD	All Students	SWD
Instituto Health Sciences	3.4%	[Redacted]	6.0%	[Redacted]
Charter HS	14.4%	18.5%	11.4%	16.5%
Comparison HS	18.5%	21.5%	18.3%	21.5%
Selective HS	6.8%	7.3%	6.4%	12.0%

Change in Percent SWD During the Year

	SY 2012-13		SY 2013-14	
	Fall Rate	Change	Fall Rate	Change
Instituto Health Sciences	12.2%	0.0%	14.2%	0.0%
Charter HS	14.7%	-0.1%	15.8%	0.1%
Comparison HS	16.8%	-0.1%	17.0%	-0.6%
Selective HS	9.9%	-0.1%	9.9%	0.0%



Net Change in Student Body

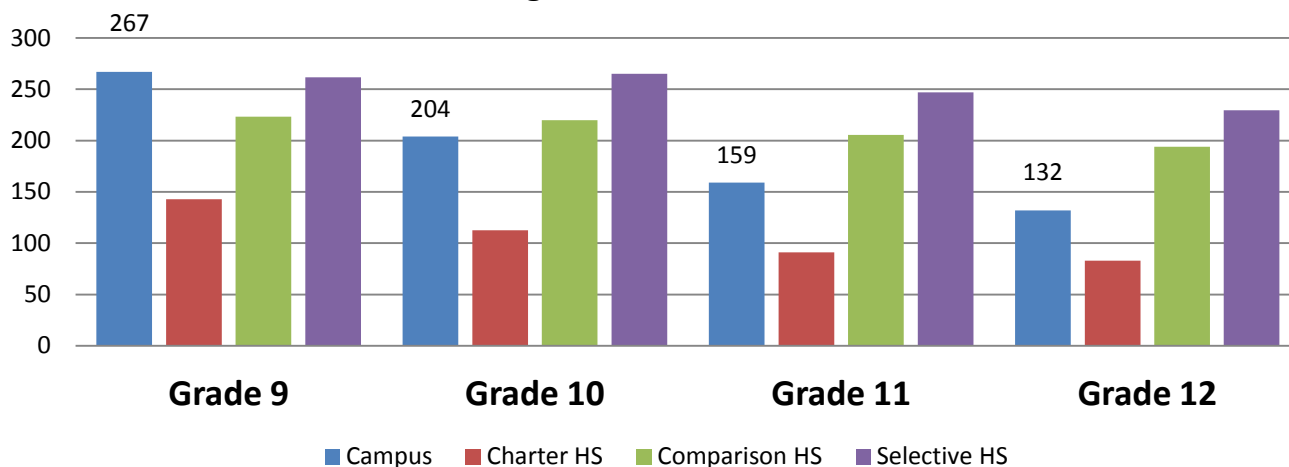


Enrollment Trends by Grade

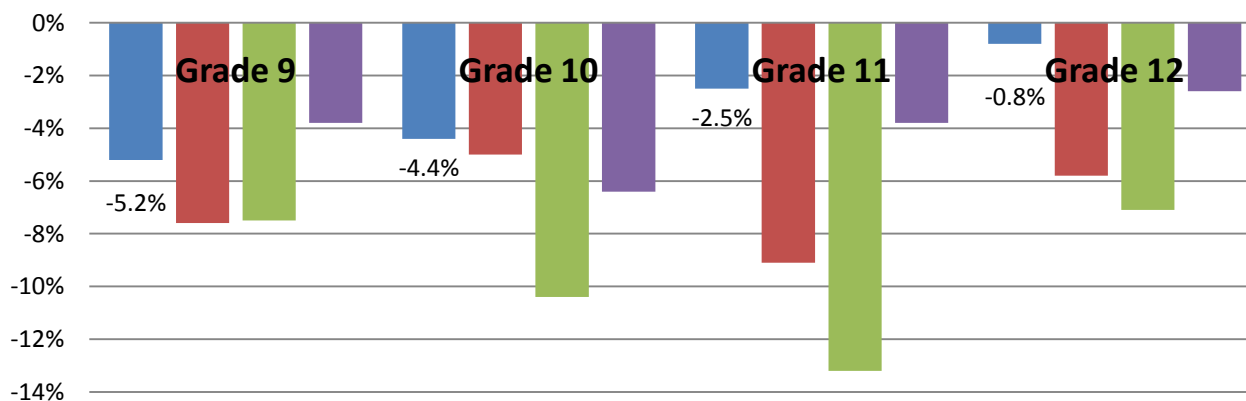
Attendance criteria for promotion: No

Behavior criteria for promotion: No

Average Enrollment Fall 2014



Average Net Enrollment Change during SY 2013-14



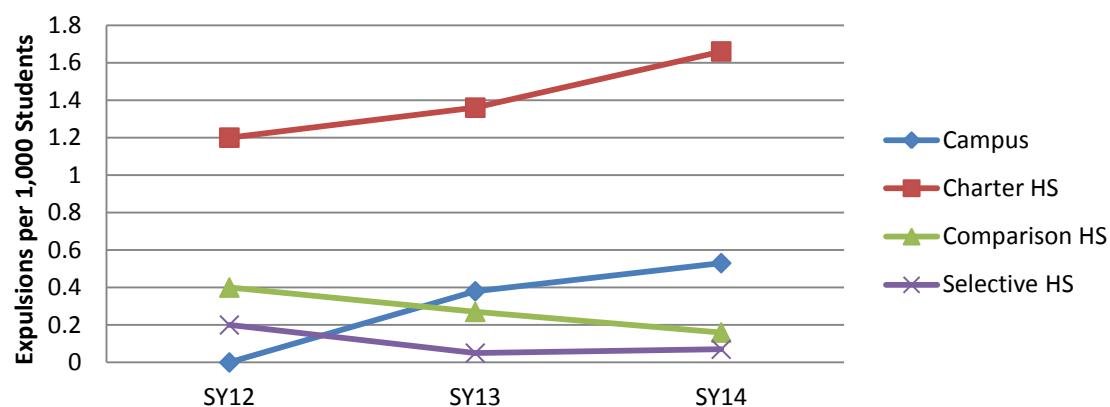


Instituto Health Sciences High School

Discipline

Use the CPS Code of Conduct?	No
Use a “sweat the small stuff” discipline code (e.g. demerits)?	Yes
Use restorative practices ² ?	Yes
Zero-tolerance for gangs or fighting ³ ?	Yes

Expulsion Rate



² Restorative practices include peer mediation, peace circles, and peer juries.

³ Does the campus code of conduct require at least one day of out-of-school suspension for fighting (general with peers) or any gang related offense.