

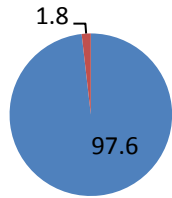
Urban Prep - Bronzeville High School



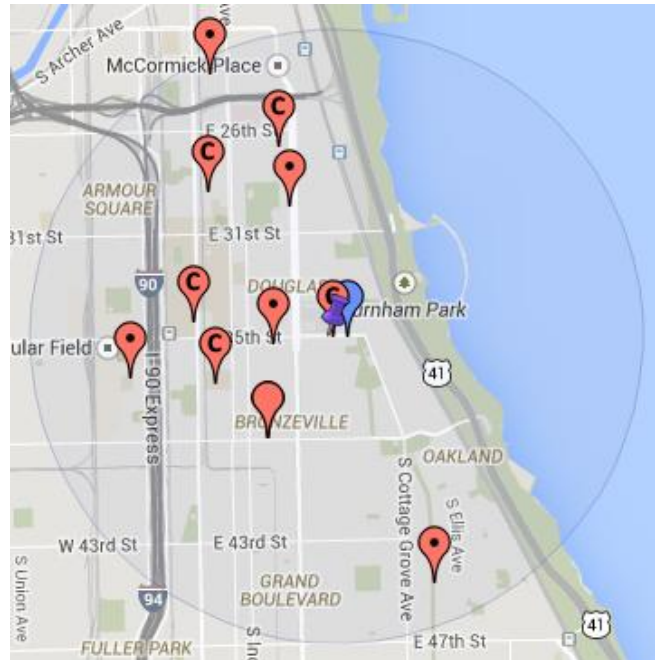
Urban Prep - Bronzeville is a charter high school located at 521 E. 35th St in the Douglas neighborhood. Urban Prep - Bronzeville serves 502 students from 9th-12th grade. It was last re-authorized in 2010 with a 5-year contract.

2013-14 School Year

Enrollment: 502
 Free Lunch: 77.1%
 ELL: 0.0%
 Bi-Lingual Services: No
 Attendance: 93.0%

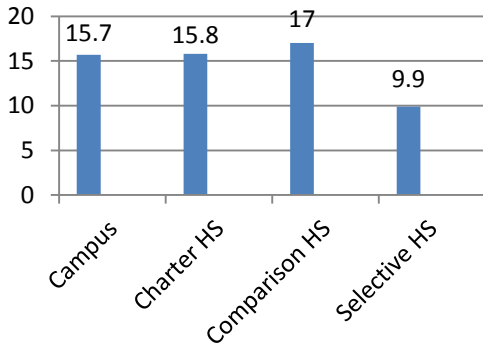


■ Black ■ Hispanic



Students with a Disability ("SWD")

SWD Enrollment Fall 2014



Urban Prep - Bronzeville is located within 1.5 miles of 10 high schools.

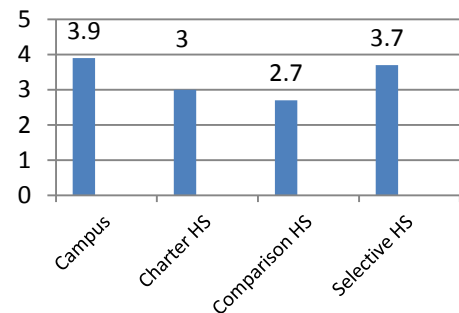
School	Type	Rating	% IEP
AIR FORCE HS	Citywide – Military	1	10.2%
CHGO MILITARY ACAD	Citywide – Military	2+	10.2%
DUNBAR HS	Citywide – CTE	2	18.9%
GRAHAM, R HS	Special Ed.	Unrated	100%
KING HS	Selective	1	8.3%
PERSPECTIVES - IIT	Charter	2+	19.6%
PHILLIPS HS	Attendance Area	3	18.4%
YCCS – COMMUNITY ACAD	Charter – Option	1	15.1%
YCCS – MCKINLEY	Charter - Option	1+	18.3%
YOUNG WOMEN'S LEADERSHIP CHTR	Charter	2	20.0%

Disability Access

Is the school accessible? No/ Unknown
 Is the case manager certified? Yes
 Did SWD participate in the quality rating¹? Not Reported
 Does the school require disability information on the application? No
 Does the application include a non-discrimination statement? No

Quality Rating¹: Level 1

Total Quality Score



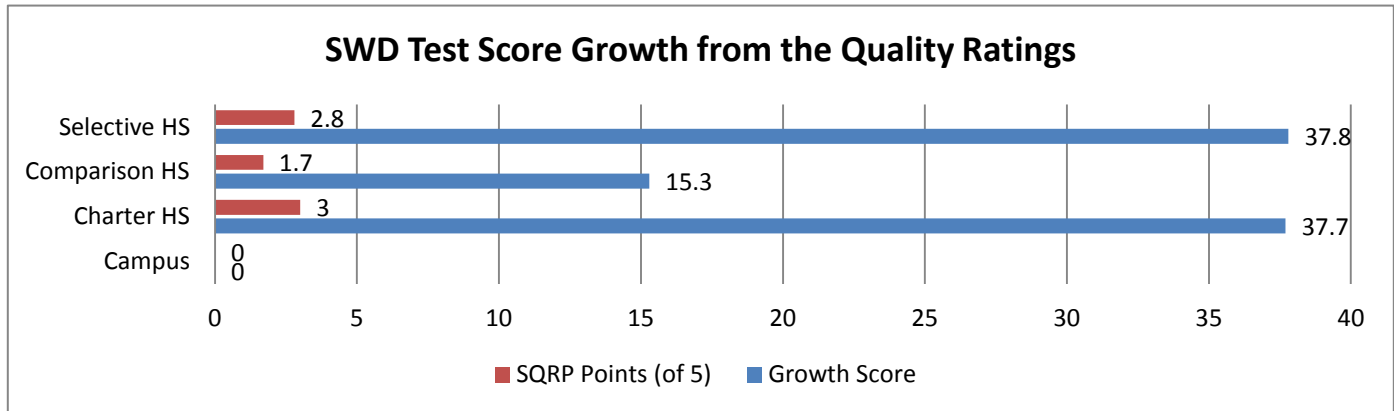
Equip for Equality is the independent, federally mandated protection and advocacy system for people with disabilities in Illinois. Questions should be directed to Charlie Wysong, (312) 895-7340.

¹ On the Chicago Public Schools School Quality Rating Policy for the 2013-14 school year.



Test results for Students with Disabilities

Students with Disabilities participation rate: Redacted



Enrollment Trends

Urban Prep - Bronzeville's mobility rate for the 2012-13 school year, according to CPS, is 14.0%, compared to 18.8% for charter high schools, 28.0% for comparison schools, and 8.4% at selective schools.

Percent of students who unenroll from the school for any reason.

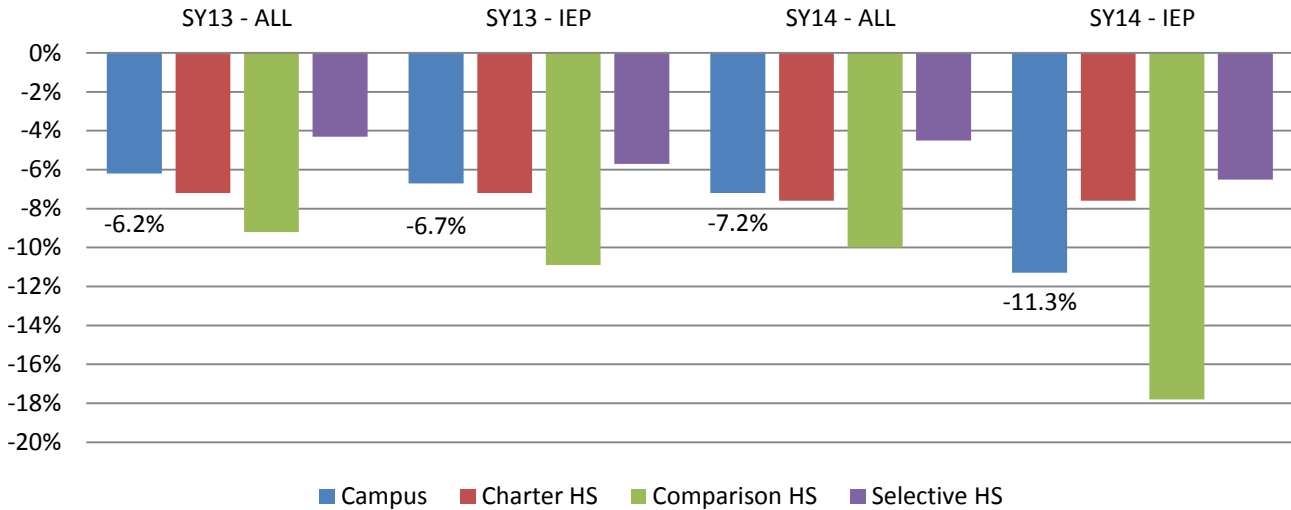
	SY 2012-13		SY 2013-14	
	All Students	SWD	All Students	SWD
Urban Prep - Bronzeville	9.6%	[Redacted]	10.2%	[Redacted]
Charter HS	14.4%	18.5%	11.4%	16.5%
Comparison HS	18.5%	21.5%	18.3%	21.5%
Selective HS	6.8%	7.3%	6.4%	12.0%

Change in Percent SWD During the School Year

	SY 2012-13		SY 2013-14	
	Fall Rate	Change	Fall Rate	Change
Urban Prep - Bronzeville	14.8%	-0.1%	15.7%	-0.5%
Charter HS	14.7%	-0.1%	15.8%	0.1%
Comparison HS	16.8%	-0.1%	17.0%	-0.6%
Selective HS	9.9%	-0.1%	9.9%	0.0%



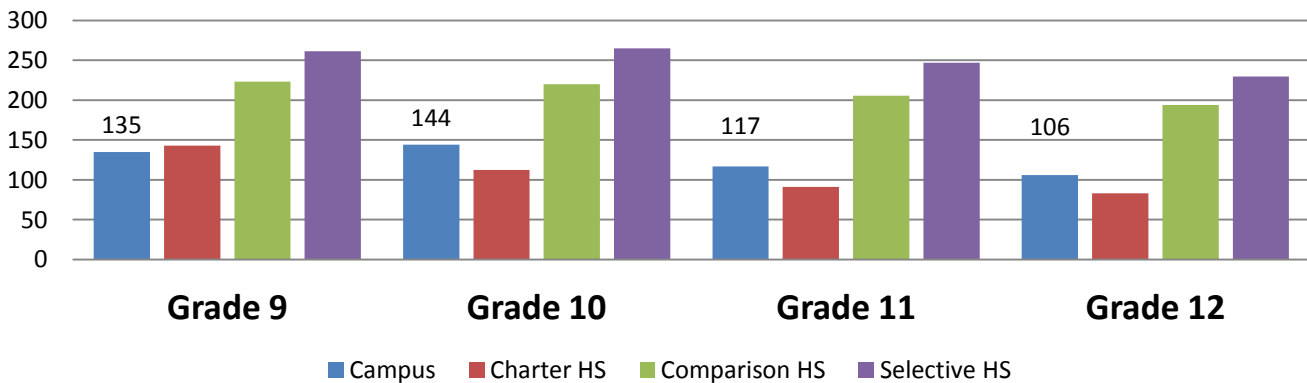
Net Change in Student Body



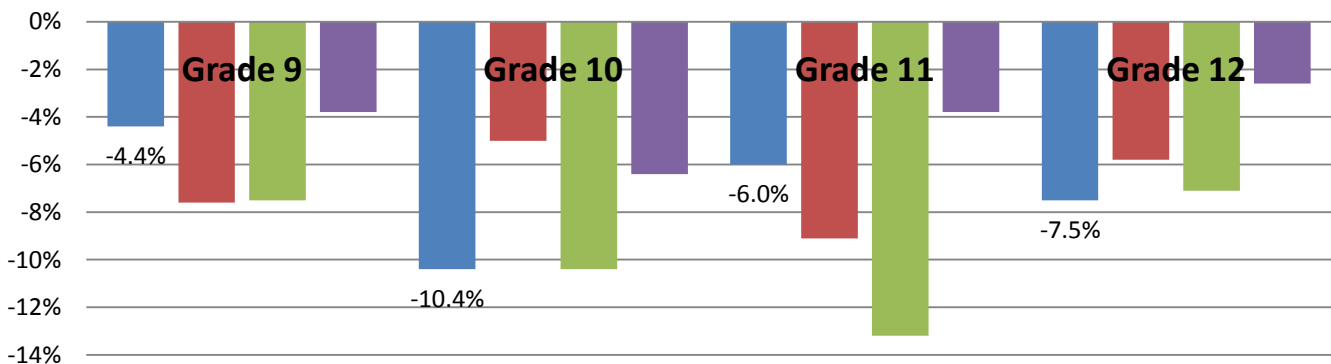
Average Enrollment Fall 2014

Attendance criteria for promotion: Unknown Behavior criteria for promotion: Unknown

Average Enrollment Fall 2014



Average Net Enrollment Change during SY 2013-14



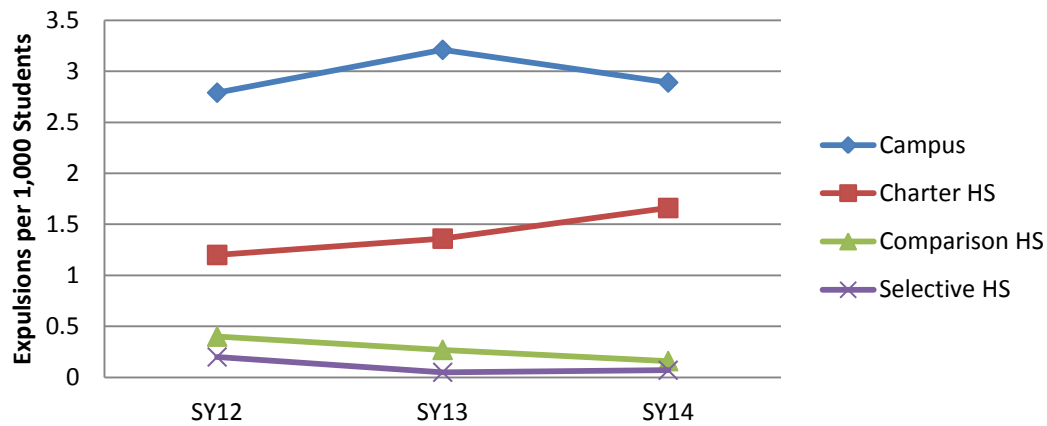
Urban Prep - Bronzeville High School



Discipline

Use the CPS Code of Conduct?	No
Use a “sweat the small stuff” discipline code (e.g. demerits)?	No
Use restorative practices ² ?	Yes
Zero-tolerance for gangs or fighting ³ ?	No

Expulsion Rate



² Restorative practices include peer mediation, peace circles, and peer juries.

³ Does the campus code of conduct require at least one day of out-of-school suspension for fighting (general with peers) or any gang related offense.