



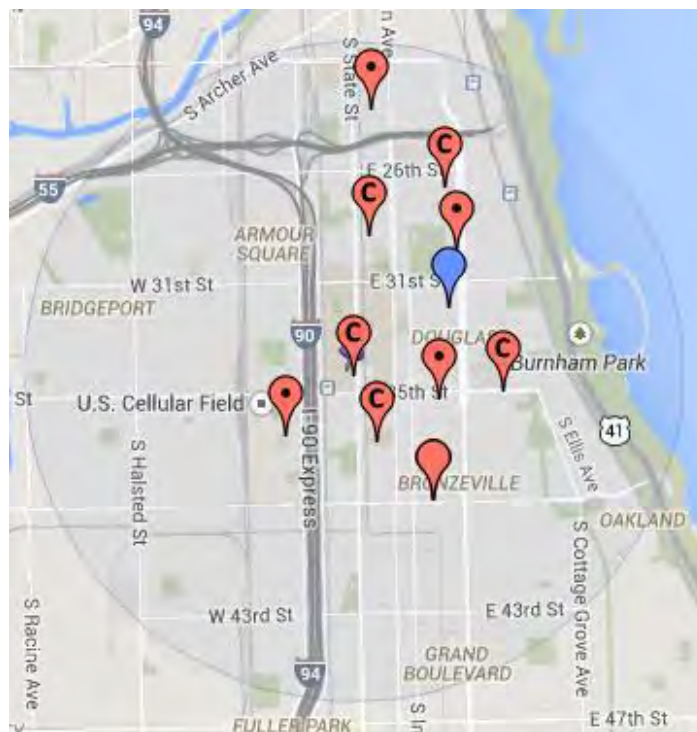
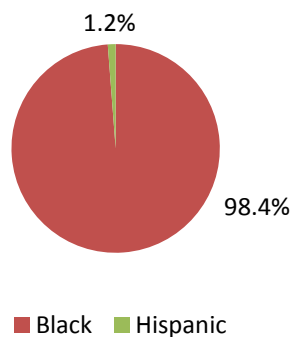
# YCCS-Leadership Academy

Option School

YCCS-Leadership Academy is a charter option (alternative) school located at 3424 S. State St in the Douglas neighborhood (CPS school ID 400145). YCCS-Leadership Academy serves 250 students from 10th-12th grade. It was last re-authorized in 2012 with a 3-year contract.

## 2013-14 School Year

Enrollment: 250  
 Free Lunch: 98.4%  
 ELL: 0.0%  
 Bi-Lingual Services:  
 Unknown  
 Attendance: 69.3%

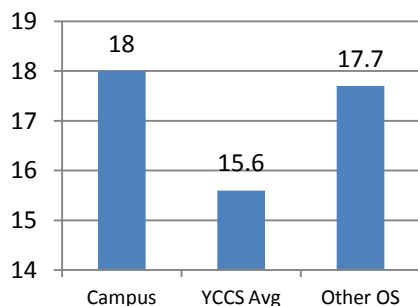


YCCS-Leadership Academy is located within 1.5 miles of 1 option high schools.

School	Type	Rating	% IEP
YCCS – McKinley	Charter-Option	1+	15.7%

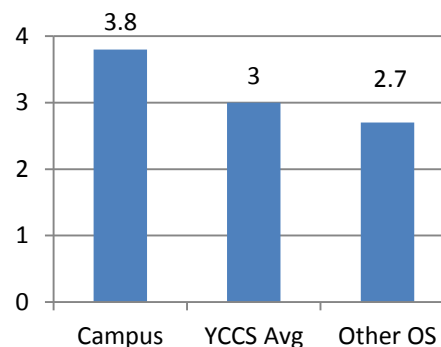
## Students with a Disability (“SWD”)

### SWD Enrollment Fall 2014



Quality Rating: Level 1

### Total Quality Score



## Disability Access

Is the school accessible?	No/ Unknown
Is the case manager certified?	Yes
Does the school require disability information on the application?	No
Does the application include a non-discrimination statement?	No

**Equip for Equality** is the independent, federally mandated protection and advocacy system for people with disabilities in Illinois. Questions should be directed to Charlie Wysong, (312) 895-7340.



# YCCS-Leadership Academy

Option  
School

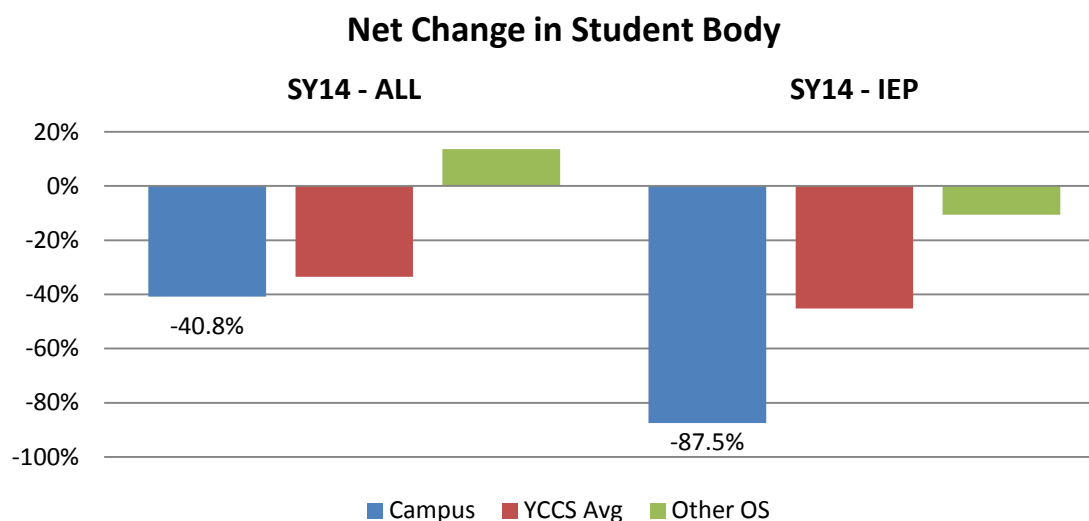
## Test results for Students with Disabilities

The CPS Quality Rating system (SQRP) does not specifically consider or report the test scores of students with disabilities in option schools, so no data is available. CPS should consider this information when evaluating option schools and should provide this information to parents and students who are looking for a school.

## Enrollment Trends

Percent of students who unenroll from the school for *any reason*.<sup>1</sup>

	SY 2013-14	
	All Students	SWD
YCCS-Leadership Academy	80.0%	73.3%
YCCS Average	65.8%	74.0%
Other OS	110.0%	135.2%



## Discipline

Use the CPS Code of Conduct?	No
Use a "sweat the small stuff" discipline code (e.g. demerits)?	No
Use restorative practices <sup>2</sup> ?	Yes
Zero-tolerance for gangs or fighting <sup>3</sup> ?	No

<sup>1</sup> Due to significant changes in option schools and data reporting for YCCS schools from the 2012-13 school year to the 2013-14 school year, this analysis only uses 2013-14 data.

<sup>2</sup> Restorative practices include peer mediation, peace circles, and peer juries.

<sup>3</sup> Does the campus code of conduct require at least one day of out-of-school suspension for fighting (general with peers) or any gang related offense.